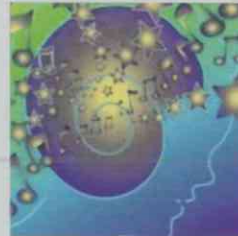


We offer FREE consultations.

Call today to schedule a  
complementary auditory  
assessment

**843-762-2386**

**RENEW.  
EMPOWER.  
IMPROVE.**



## **Lightworks**

Dr. Cynthia Mignano  
AIT Practitioner  
914 C Folly Rd.  
Charleston, SC 29412  
843-762-2386  
mfcc@knology.net  
mignanofamilychiropractic.com

## Berard Auditory Integration Training



## **Lightworks**

A ten day protocol that addresses  
symptoms related to:

- ADD / ADHD
- Autism
- Poor attention
- Difficulty remembering
- Low tolerance for distractions
- Slowed thinking and processing
- Hypersensitivity to sounds (overly sensitive)
- Hyposensitivity to sounds (tuned out)
- Speech and language delays
- Stuttering
- Difficulty with reading, writing, and spelling
- Challenges with learning
- Poor balance and coordination
- Difficulty listening and understanding
- Speaking too loud or soft
- Challenges with social skills

## What is Berard Auditory Integration Training (AIT)?

Berard AIT is a listening program that reorganizes the sensory center of the brain through use of a specific program of modulated and filtered classical music. This stimulates the brain to improve information processing and decrease auditory overload.

The training program can be used with children and adults. Ten hours of listening is required to reorganize the brain. Improvements may be noted during the 10 days of training, but gains can occur up to 6 months after.

## Common challenges

### How was Berard AIT developed?

Berard AIT was developed by Dr. Guy Berard, MD, a French Ear, Nose, and Throat physician, to address ringing in his ears. He used and refined the program for over 30 years and learned that it helped with other processing difficulties such as autism spectrum disorders and sensory issues.

## Who benefits from AIT?

Individuals who have difficulties processing auditory and sensory information often have challenges interpreting their daily experiences. Information may be heard incorrectly and, in turn, impact learning and communication. With time, behavioral issues and social skills may be affected.

Auditory and sensory processing difficulties often occur with attention deficit hyperactivity disorder, brain injury, autism spectrum disorder, dyslexia, central auditory processing disorder, and learning disabilities.

## that are improved

- Poor attention
- Difficulty remembering
- Low tolerance for distractions
- Slowed thinking and processing
- Hypersensitivity to sounds (overly sensitive)
- Hyposensitivity to sounds (tuned out)
- Difficulty ignoring background sounds

## Berard AIT

goes beyond typical expectations.

We offer services that improve functioning, empower individuals, and renew lives.



## with Berard AIT:

- Speech and language delays
- Stuttering
- Difficulty with reading, writing, and spelling
- Challenges with learning
- Poor balance and coordination
- Difficulty listening and understanding
- Speaking too loud or soft
- Challenges with social skills